

‘**Host of the month**’ is a series of information sheets and blogs that highlight a tree host and their associated priority pests and diseases that are best seen and recorded in that month. For May we’re looking at true cedars (*Cedrus* species) and *Sirococcus* blight.

Cedar of Lebanon and Deodar have deep connections with myth and legend. The titular hero of the Epic of Gilgamesh travels to the sacred cedar forest to kill its guardian and cut down the trees. In the Bible Cedar of Lebanon provided the timber for Solomon’s temple and Moses suggested the use of its bark to cure leprosy. The durable and highly aromatic wood of true cedars has been in use for at least 5000 years. It’s popularity for construction of religious buildings, ships and furniture was likely the cause behind once vast forests being reduced to the remnants we see today. Against this background Cedar of Lebanon may have been the first tree to benefit from conservation action when it received special protection by order of the Roman Emperor Hadrian. Both Cedar of Lebanon and Cyprus cedar are classified as Vulnerable by the IUCN, Atlas cedar as endangered, and Deodar as ‘Least concern’.

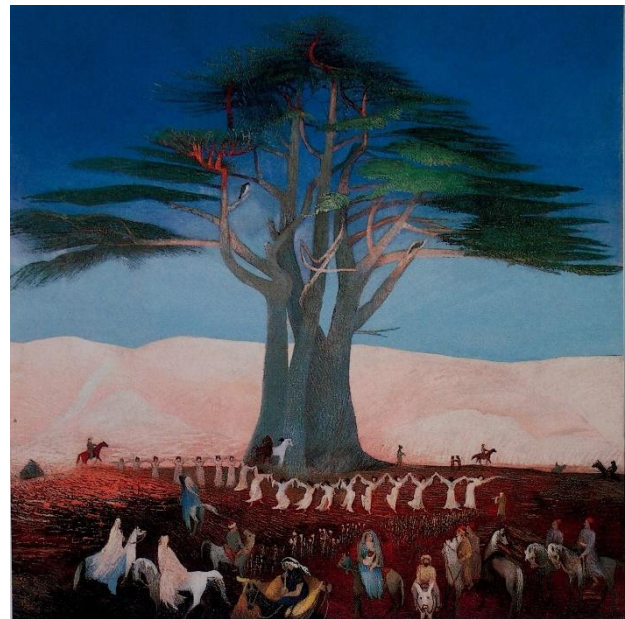


Figure 1: Pilgrimage to the Cedars of Lebanon by Tivadar Csontváry Kosztka, 1907.

True cedars belong to the Genus *Cedrus* within the *Pinaceae* family alongside Pines (*Pinus*), Firs (*Abies*), Spruce (*Picea*) and Larch (*Larix*) among others. Four species are currently recognised: Cedar of Lebanon (*C. libani*), Atlas cedar (*C. atlantica*), Cyprus cedar (*C. brevifolia*) and Deodar (*C. deodara*). The first three are Mediterranean and closely related, Deodar however hails from the Himalayas. Lebanon, Atlas and Deodar cedars are reasonably common across the UK, historically they were extremely popular specimen trees in the grounds of stately homes and parks where older individuals display their distinctive layered appearance.

True cedars are relatively straightforward to tell from other *Pinaceae*, all are evergreen with stiff needles that have a quadrangular cross-section arranged in two ways; spiralling and single on long terminal shoots, and in whorls of 20+ on short lateral shoots (fig. 2). Larches (*Larix* species) have the same needle arrangement, but they are deciduous, the needles are soft and flat in cross-section, and their cones are smaller and don’t shatter at maturity but remain intact and are retained on the tree for a number of years.

Observatree is a citizen science project led by Forest Research, in collaboration with key organisations



Figure 2: Top left – foliage of Atlas cedar with single needles on the most recent growth, and clusters on older growth, top right – male pollen cones of Deodar, bottom left – immature female cone of Atlas cedar, bottom middle – shattered female cone of Atlas cedar and, bottom right, cone scale and winged seed of Deodar.

Male cones are produced in the autumn (fig. 2) and fall from the tree once pollen has been dispersed, often littering the ground beneath trees. The barrel-like female cones are always upright on the branches (fig. 2) and rarely fall to the ground intact, breaking apart in situ to release the winged seeds (fig. 2).

Outside of their native ranges however, telling the three species commonly found in the UK apart is not straight forward. The well-used assertion that ‘Atlas ascends, Lebanon is level and Deodar droops’ refers to the tips of young branches and gives a quick and dirty answer but is not reliable. Similarly, there’s a pretty good chance that any ‘blue’ cedar will most likely be Atlas, but blue forms of the other species do exist!! In reality a consensus formed from a group of characters is needed as per the table below.

Many other trees have ‘Cedar’ in their common names but are not related. Species such as Western red-cedar (*Thuja plicata*), Japanese cedar (*Cryptomeria japonica*) or Incense cedar (*Calocedrus decurrens*) are not affected by *Sirococcus tsugae*.

Observatree is a citizen science project led by Forest Research, in collaboration with key organisations

	Atlas	Lebanon	Deodar
Mean needle length (on whorls)	<1.8 cm	1.5-3.0 cm	3-6 cm
Needles per whorl	20 - 45	20 - 35	20 - 30
Shoot hairs (x10 hand lens)	Minutely hairy	More or less hairless	Minutely hairy
Translucent needle-tip (x10 lens)	Gradual taper, 0.5mm long	Abrupt taper, 0.2mm long	Gradual taper, 0.4mm long
Foliage colour	More often glaucous aka 'blue' in cultivation	Light to dark green, very rarely glaucous green.	Green to grey-green
Lead shoot	Erect	Erect	Drooping
Young branch tips	Ascending (usually, but can sometimes be drooping)	Mostly level/horizontal	Drooping
Male cones	3-4cm	4-5cm	>5cm
Male cones mature	Mid-September	Early November	Early November
Major stems	Often multiple	Often multiple	Usually single

Priority pathogen - *Siroccocus* blight (*Siroccocus tsugae*)

Siroccocus tsugae is a fungal pathogen which affects true Cedars and Hemlocks (*Tsuga* species). It was first confirmed in the UK in 2014 and has been reported affecting all three Cedar species commonly found in England, Scotland, Wales and Northern Ireland. There are two confirmed spreading mechanisms, via rain-splash in the immediate vicinity and possibly over longer distances when combined with strong winds, and via planting stock.

Identification

The most obvious sign of infection with *S. tsugae* on Atlas cedar is the striking pink-ish discoloration of infected needles most visible in early to mid-summer (figure 3). In other species infected needles turn brown. Cankers can be difficult to spot but resin patches on shoots or fruit bodies can indicate their presence beneath the bark (fig. 4).

Infected needles are shed early from the tree and defoliation can be severe and often results in a thinning, patchy crown. Although tree death is common it is not inevitable, but many trees are removed for aesthetic reasons.

Observatree is a citizen science project led by Forest Research, in collaboration with key organisations



Previously 50% funded by the EU's LIFE+ Programme (2013-2017)



Figure 3: 'pink' discoloration of needles and wilting shoot tips of Atlas cedar caused by *S. tsugae*. ©Crown copyright. Forest Research



Figure 4: Black fruit bodies of *S. tsugae* on the surface of a canker (left) and resin patches associated with cankers (right) on shoots of Atlas cedar. ©Crown copyright. Forest Research

Observatree is a citizen science project led by Forest Research, in collaboration with key organisations

Lookalikes

Sirococcus conigenus is a closely related fungal pathogen which can infect a range of conifer species including Cedar of Lebanon. Needles affected by *S. conigenus* turn orange rather than pink and shoots take on a shepherd's crook-like shape (fig. 5).



Figure 5: Typical orange branchlet tips (left) and 'shepherd crook' deformation caused by *S. conigenus* on Cedar of Lebanon. ©Crown copyright. Forest Research

Allantophomopsiella pseudotsugae can cause symptoms like those caused by *S. tsugae* on *Cedrus* species, often resulting in shoot and branch death as a result of lesions girdling the stem.

Reporting

Sirococcus tsugae is a priority disease in the UK so please report possible sightings via [TreeAlert](#).

For more information and resources on this disease check the [Observatree website](#).

Matt Parratt, Forest Research, April 2026

Observatree is a citizen science project led by Forest Research, in collaboration with key organisations